



GOODWOOD

— G R A N D —

FLOOR PLANS



SIMPLY SURREAL

Savour the quiet that echoes throughout the lush landscapes and pristine surroundings. Unwind in privacy within the desirable Tower residences or magnificent Strata Bungalows. Or simply revel in the bright lights of the big city.

At **GOODWOOD GRAND**, you'll discover a verdant yet vibrant enclave in the heart of town; the city's garden residence that's yours to own.

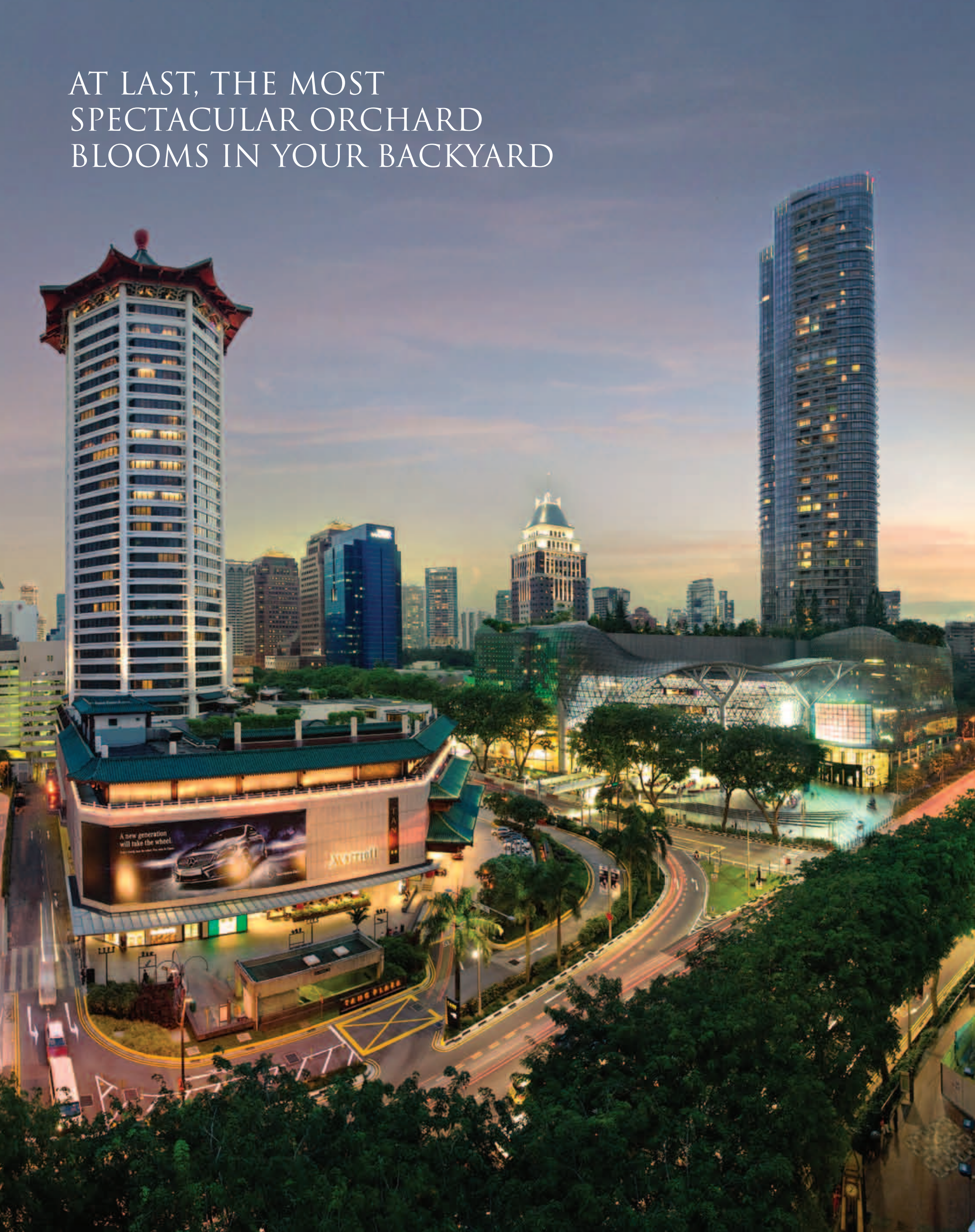


Artist's Impression

NATURALLY STUNNING

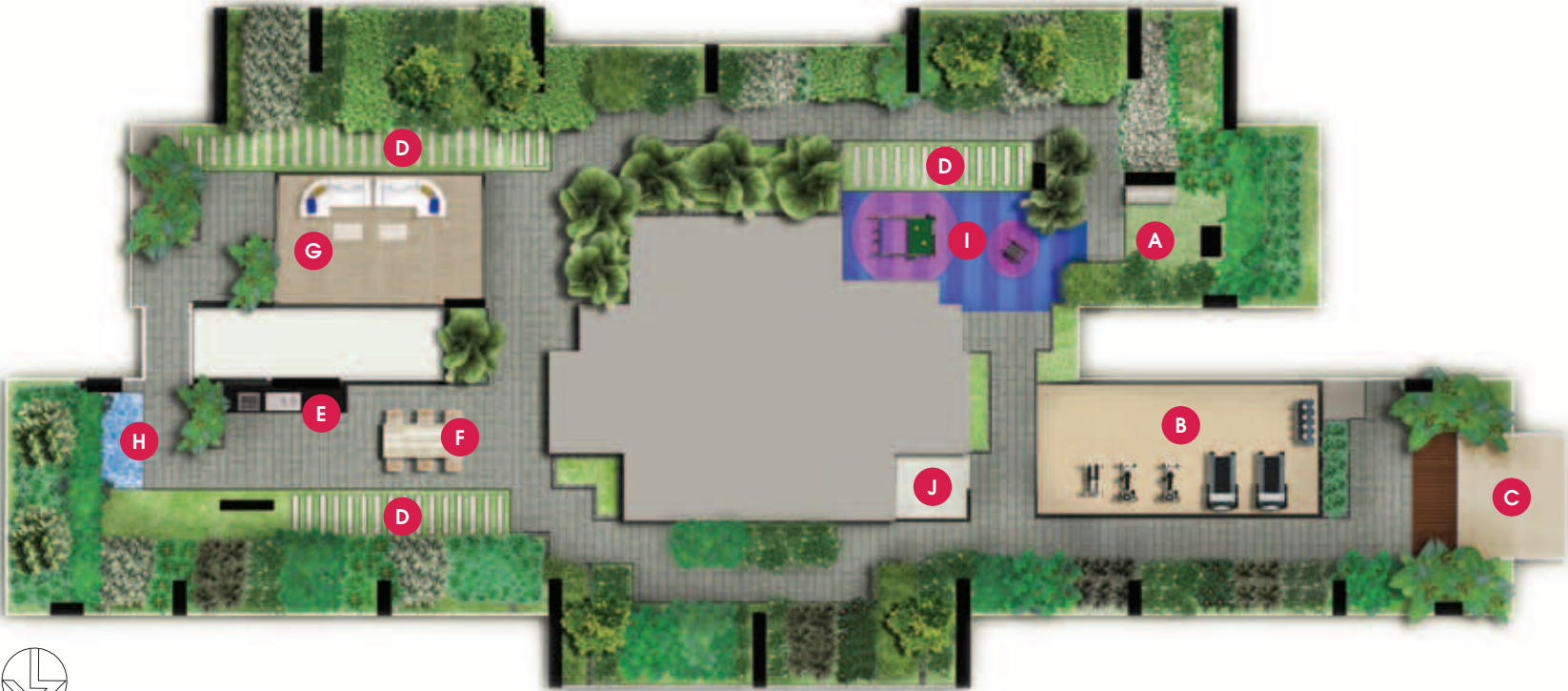
Towering over the surrounding foliage, the Tower features a seamless integration of clean lines and vertical elements, extending from ground to sky. Together with a beautiful lush sky terrace, the Tower showcases architecture inspired by nature and its green habitat. The eight Strata Bungalows lend an extra touch of prestige and splendour to **GOODWOOD GRAND**.

AT LAST, THE MOST
SPECTACULAR ORCHARD
BLOOMS IN YOUR BACKYARD



SITE PLAN

- | | | | |
|----------------------|------------------|---------------------------|------------------------|
| A. Main Entrance | D. Green Trellis | G. Children's Splash Pool | J. Tranquil Garden |
| B. Arrival Courtyard | E. Grand Walkway | H. Sun Deck | K. Reflective Pond |
| C. Guardhouse | F. Play Lawn | I. Infinity Lap Pool | L. Verdant Garden Walk |



SKY TERRACE PLAN (10TH STOREY)

- | | | | |
|------------------------|---------------------|-------------------------|--------------------|
| A. Meditation Corner | D. Stepping Lawn | G. Grand Clubhouse | J. Handicap Toilet |
| B. Indoor Gymnasium | E. BBQ Patio | H. Waterscape | |
| C. Observation Veranda | F. AI Fresco Dining | I. Children's Play Zone | |

UNIT DISTRIBUTION

2-BEDROOM+STUDY

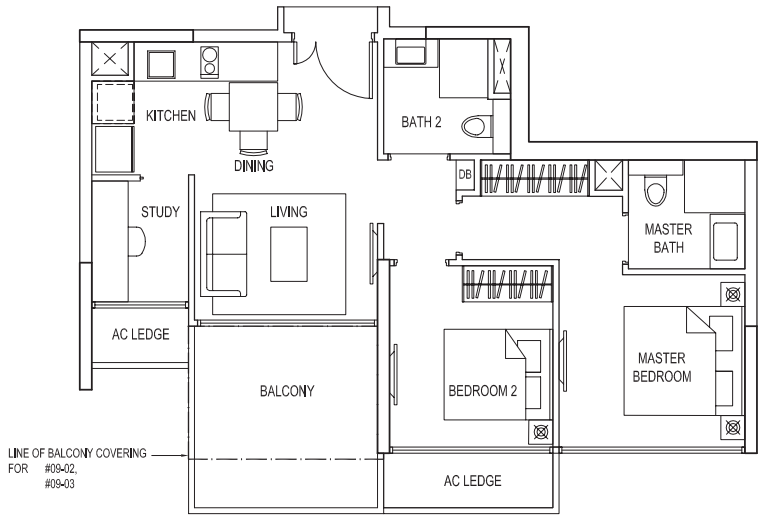
Tower Block
16 Balmoral Road

Unit \ Level	1	2	3	4	5	6	7
Roof	3PH(R) #12-01		3PH(R) #12-02		4PH(R) #12-03		
12							
11	3PH #11-01		3PH #11-02		4PH #11-03		
10	Sky Terrace						
9	C1	BS1	BS1	C1	C2	BS2	C2
8	C1	BS1	BS1	C1	C2	BS2	C2
7	C1	BS1	BS1	C1	C2	BS2	C2
6	C1	BS1	BS1	C1	C2	BS2	C2
5	C1	BS1	BS1	C1	C2	BS2	C2
4	C1	BS1	BS1	C1	C2	BS2	C2
3	C1	BS1	BS1	C1	C2	BS2	C2
2	C1			C1	C2	BS2	C2
1	C1(P)			C1(P)	C2(P)	BS2(P)	C2(P)

Strata Bungalows
18, 20, 22, 24, 26, 28, 30 & 32 Balmoral Road

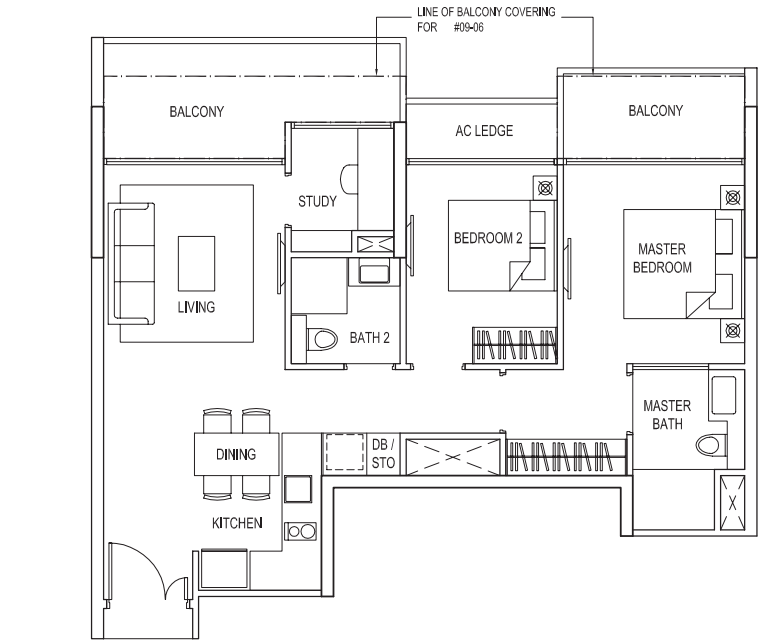
House No.	Type
18	D2
20	D1
22	D1
24	D3
26	D4
28	D1
30	D1
32	D5

- BS12-bedroom + Study
- BS22-bedroom + Study
- C13-bedroom
- C23-bedroom + Utility
- 3PH3-bedroom Penthouse
- 4PH4-bedroom Penthouse
- DStrata Bungalows
- (P) - PES | (R) - Roof



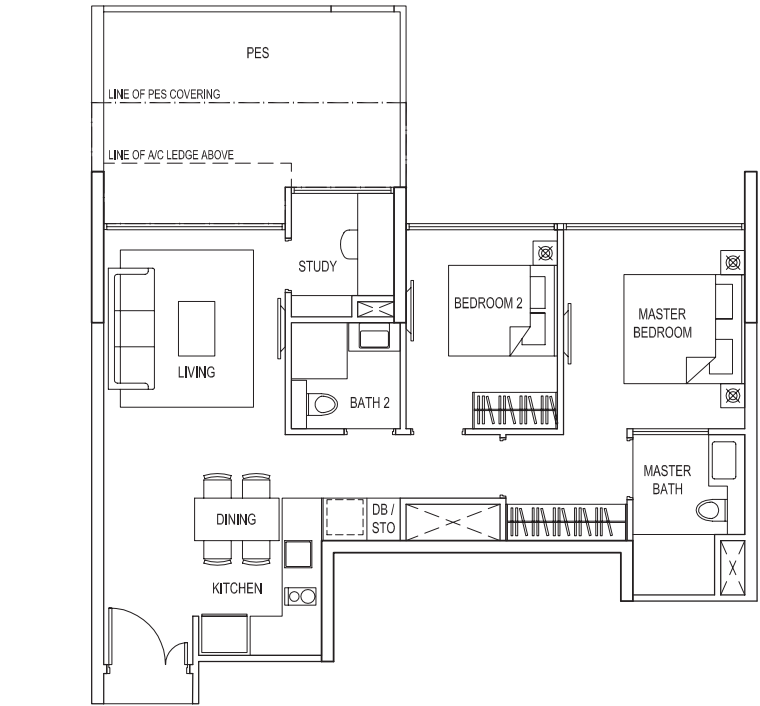
TYPE:BS1

Area: 72 sqm / 775 sqft
Unit:
#03-03, #04-03, #05-03, #06-03,
#07-03, #08-03, #09-03
Mirror Image Unit:
#03-02, #04-02, #05-02, #06-02,
#07-02, #08-02, #09-02



TYPE:BS2

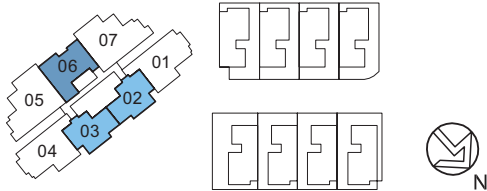
Area: 83 sqm / 893 sqft
Unit:
#02-06, #03-06, #04-06, #05-06,
#06-06, #07-06, #08-06, #09-06



TYPE:BS2(P)

Area: 83 sqm / 893 sqft
Unit: #01-06

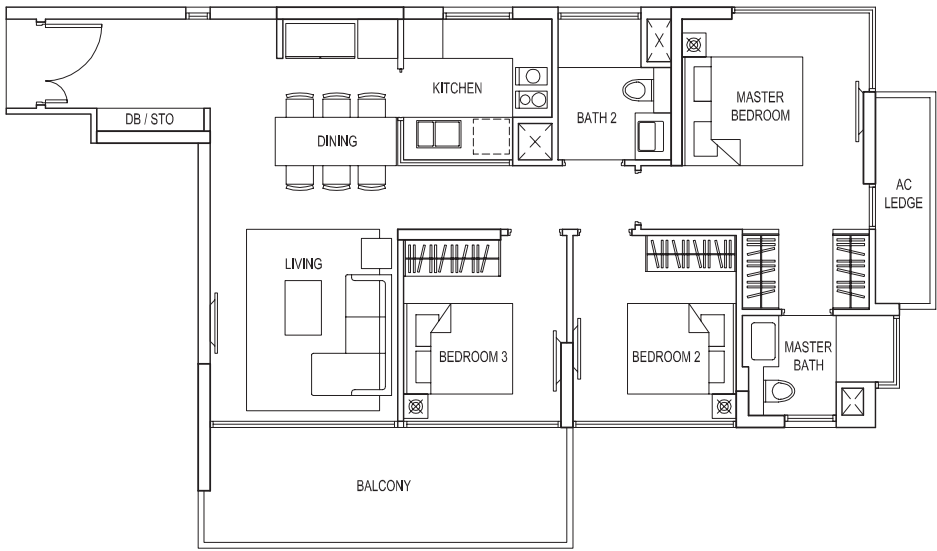
Note: The plans are subject to change as may be required or approved by the relevant authorities. These are not drawn to scale and are for the purpose of visual presentation of the different layouts that are available. Areas are estimates only and are subject to final survey.



3-BEDROOM

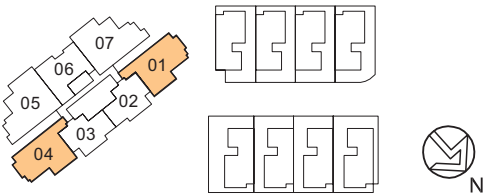
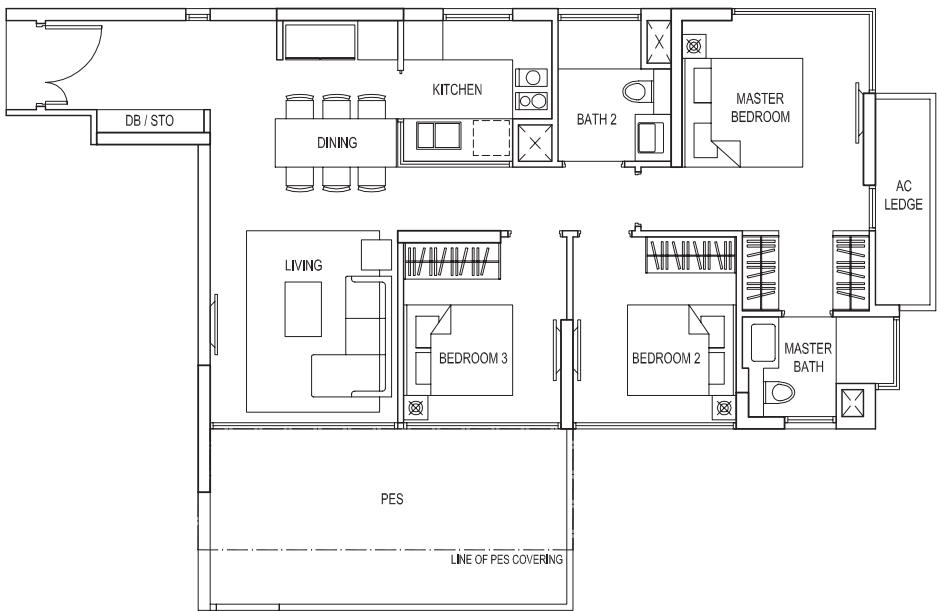
TYPE:C1

Area: 97 sqm / 1044 sqft
Unit: #02-01, #03-01, #04-01, #05-01, #06-01, #07-01, #08-01, #09-01
Mirror Image Unit: #02-04, #03-04, #04-04, #05-04, #06-04, #07-04, #08-04, #09-04



TYPE:C1(P)

Area: 103 sqm / 1109 sqft
Unit: #01-01
Mirror Image: #01-04

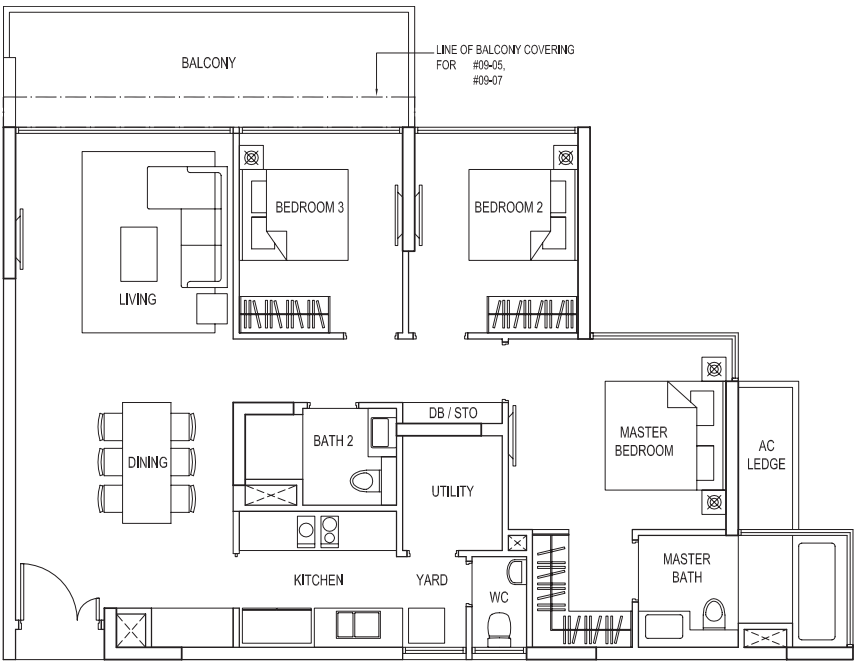


Note: The plans are subject to change as may be required or approved by the relevant authorities. These are not drawn to scale and are for the purpose of visual presentation of the different layouts that are available. Areas are estimates only and are subject to final survey.

3-BEDROOM+UTILITY

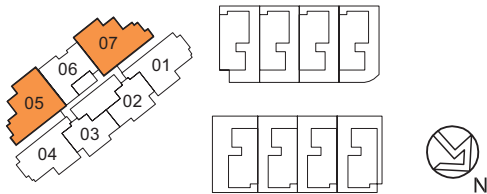
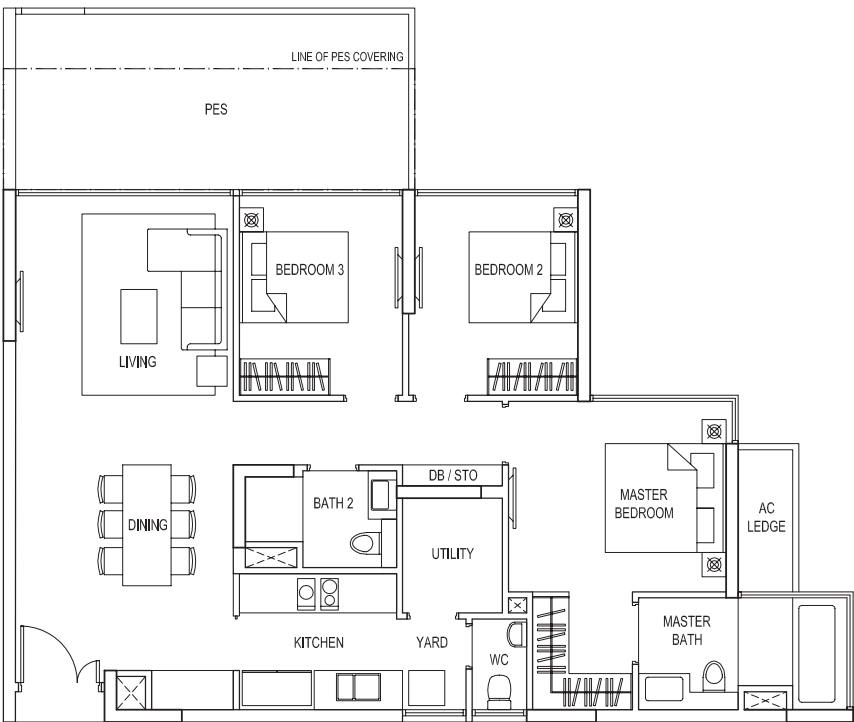
TYPE:C2

Area: 114 sqm / 1227 sqft
Unit: #02-07, #03-07, #04-07, #05-07, #06-07, #07-07, #08-07, #09-07
Mirror Image Unit: #02-05, #03-05, #04-05, #05-05, #06-05, #07-05, #08-05, #09-05



TYPE:C2(P)

Area: 121 sqm / 1302 sqft
Unit: #01-07
Mirror Image: #01-05

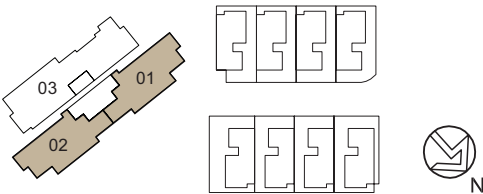
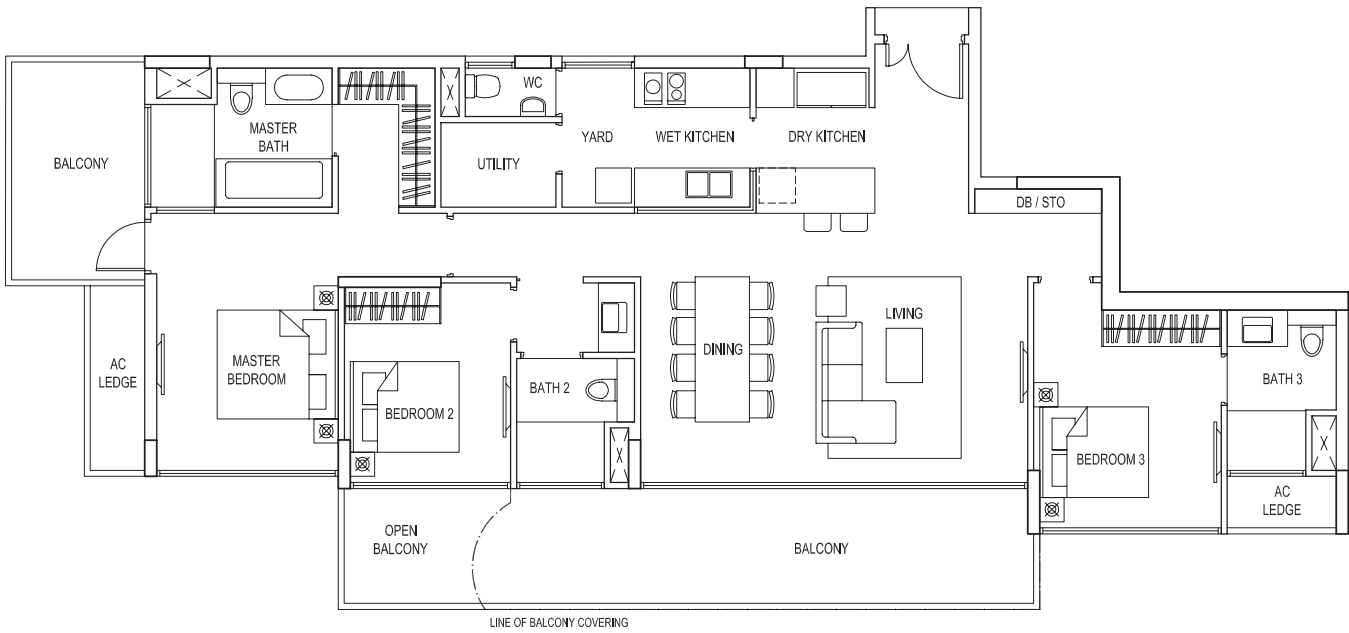


Note: The plans are subject to change as may be required or approved by the relevant authorities. These are not drawn to scale and are for the purpose of visual presentation of the different layouts that are available. Areas are estimates only and are subject to final survey.

3-BEDROOM PH

TYPE:3PH

Area: 156 sqm / 1679 sqft
Unit: #11-02
Mirror Image Unit: #11-01

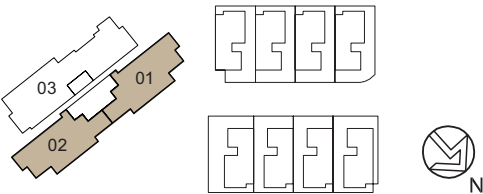
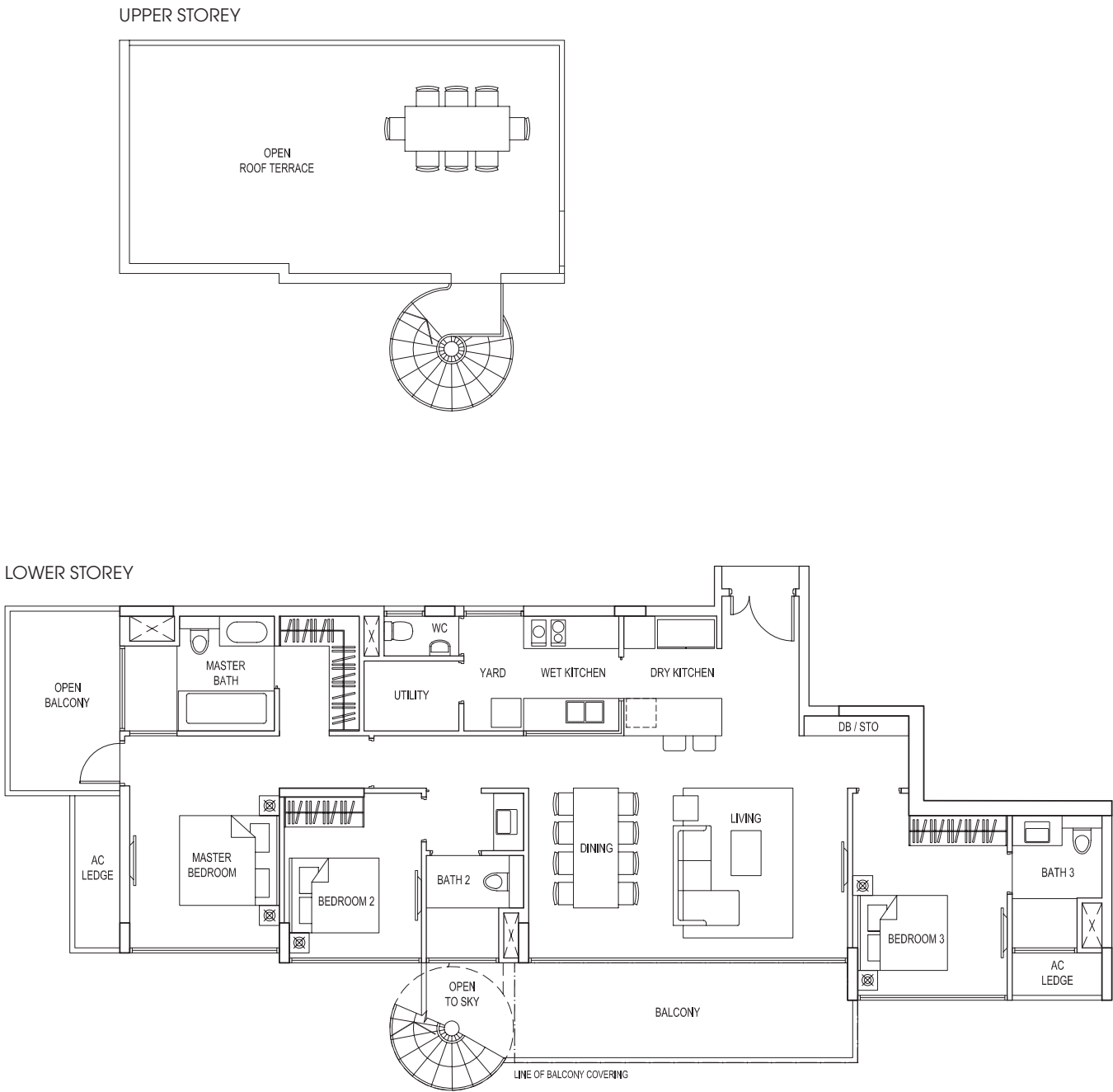


Note: The plans are subject to change as may be required or approved by the relevant authorities. These are not drawn to scale and are for the purpose of visual presentation of the different layouts that are available. Areas are estimates only and are subject to final survey.

3-BEDROOM PH(R)

TYPE:3PH(R)

Area: 199 sqm / 2142 sqft
Unit: #12-02
Mirror Image Unit: #12-01

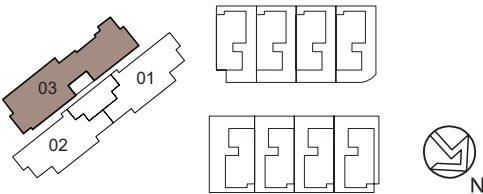
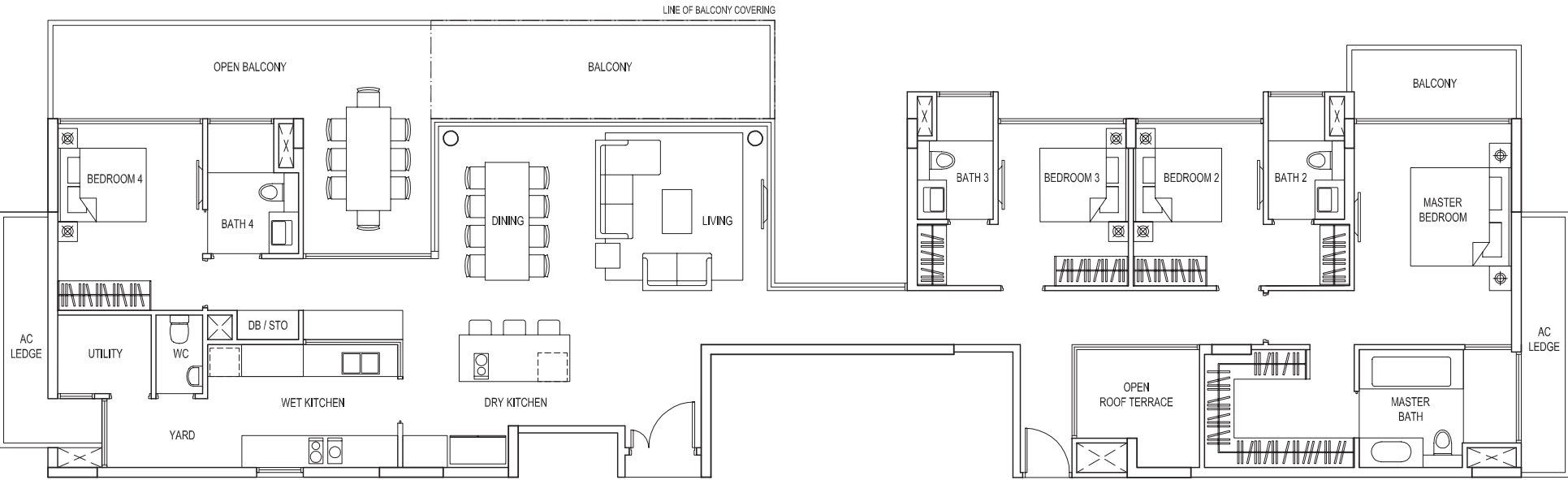


Note: The plans are subject to change as may be required or approved by the relevant authorities. These are not drawn to scale and are for the purpose of visual presentation of the different layouts that are available. Areas are estimates only and are subject to final survey.

4-BEDROOM PH

TYPE:4PH

Area: 231 sqm / 2486 sqft
Unit: #11-03

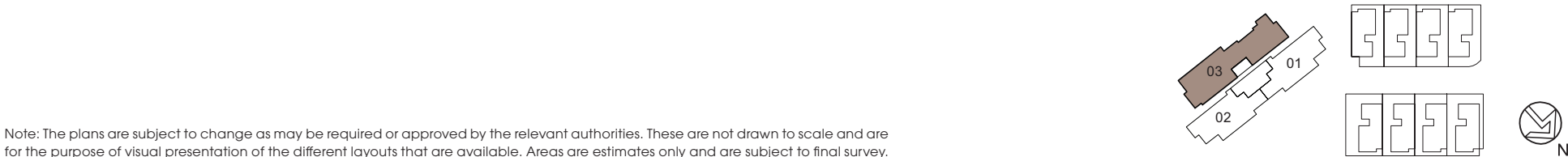
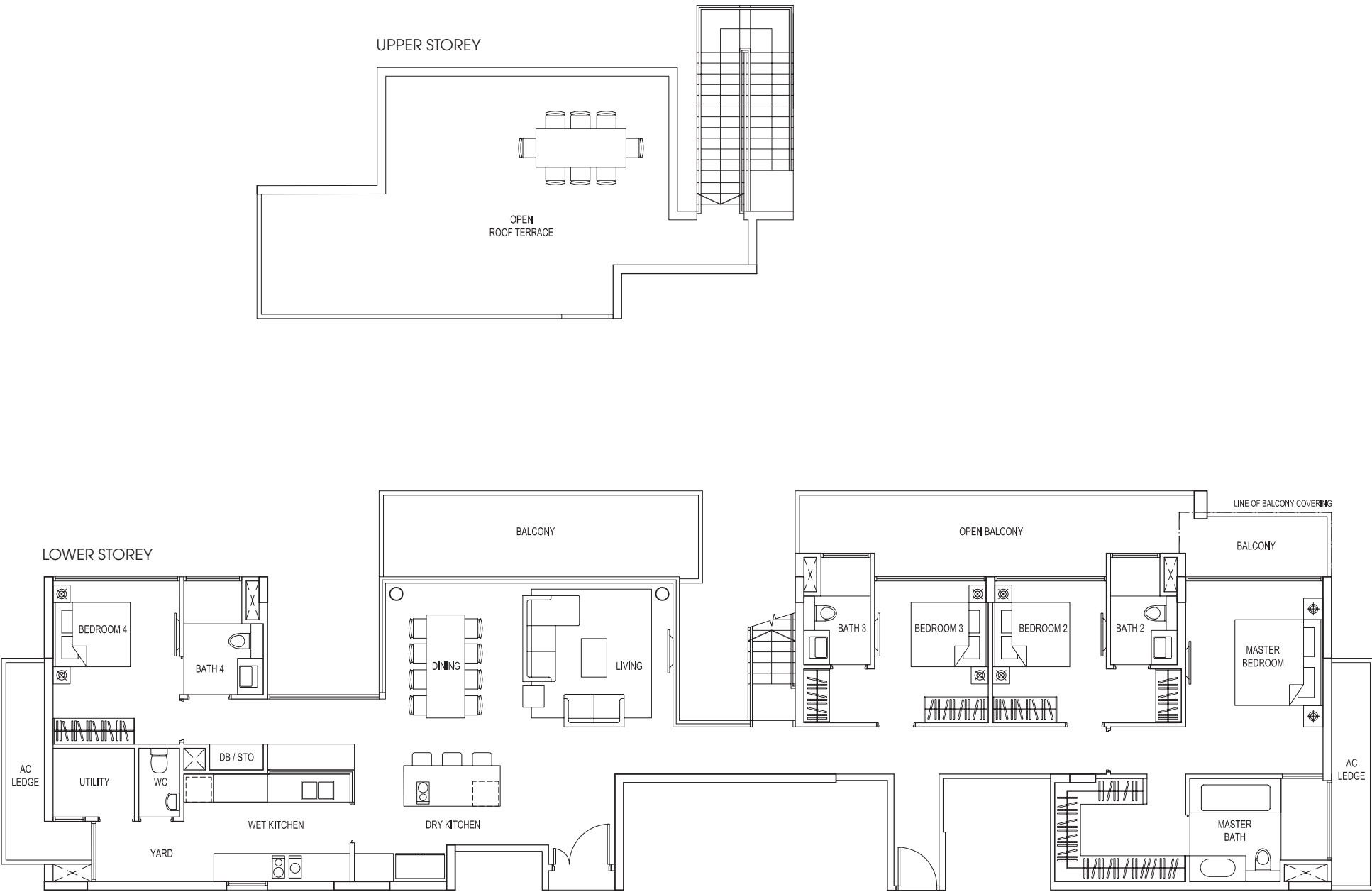


Note: The plans are subject to change as may be required or approved by the relevant authorities. These are not drawn to scale and are for the purpose of visual presentation of the different layouts that are available. Areas are estimates only and are subject to final survey.

4-BEDROOM PH(R)

TYPE:4PH(R)

Area: 289 sqm / 3111 sqft
Unit: #12-03



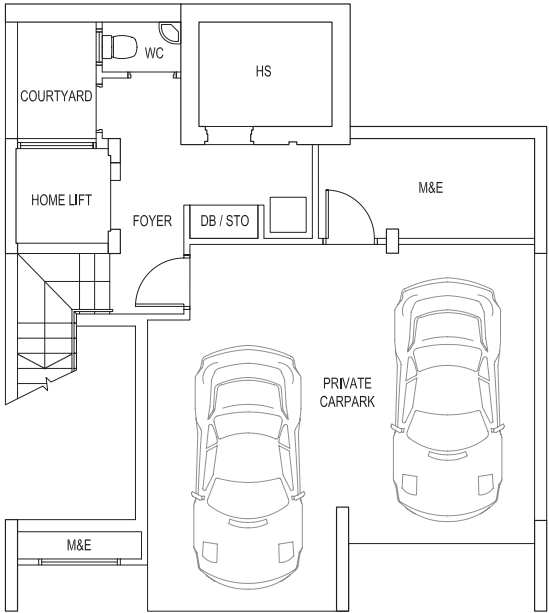
Note: The plans are subject to change as may be required or approved by the relevant authorities. These are not drawn to scale and are for the purpose of visual presentation of the different layouts that are available. Areas are estimates only and are subject to final survey.

STRATA BUNGALOWS

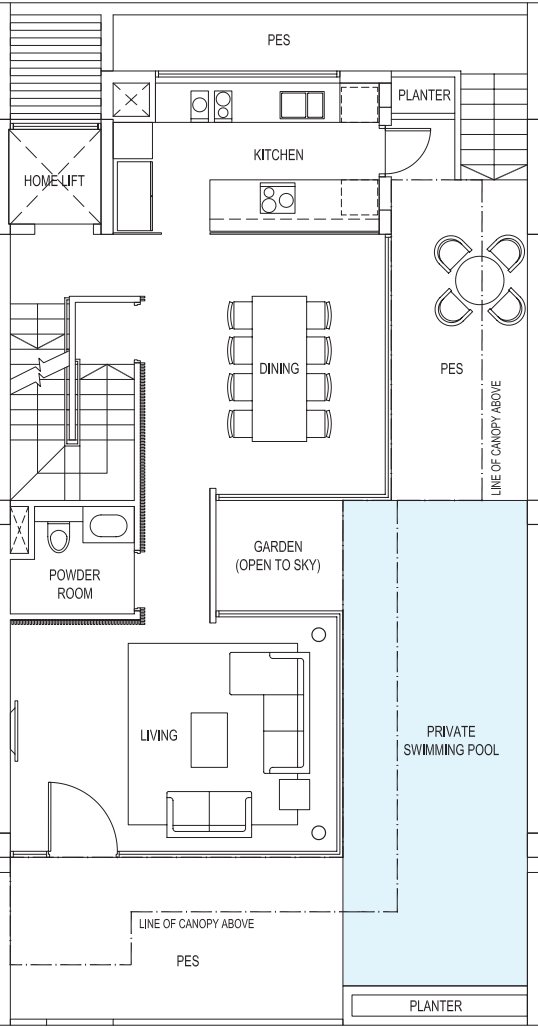
TYPE:D1

Area: 486 sqm / 5231 sqft
House No. 28, 30
Mirror image house no. 20, 22

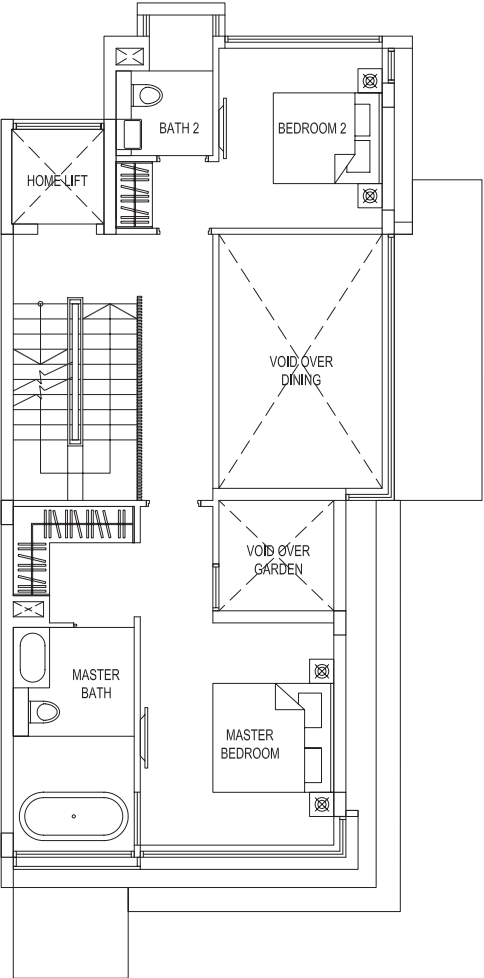
BASEMENT



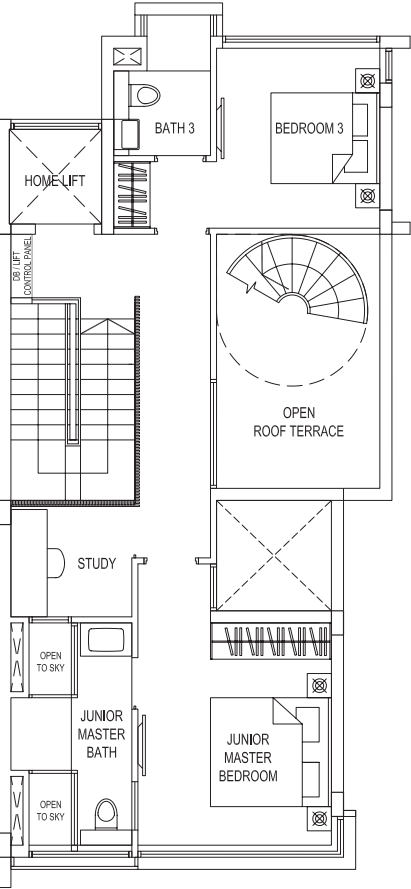
1ST STOREY



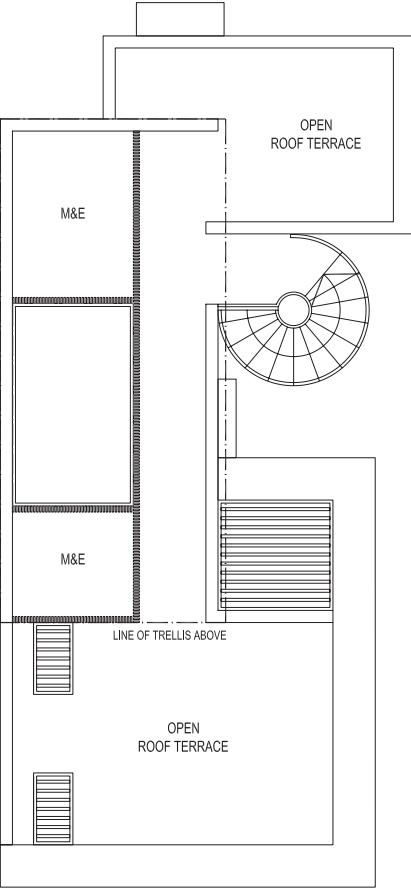
2ND STOREY



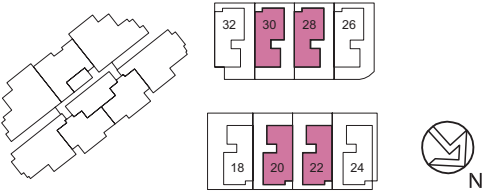
3RD STOREY



ROOF TERRACE



Note: The plans are subject to change as may be required or approved by the relevant authorities. These are not drawn to scale and are for the purpose of visual presentation of the different layouts that are available. Areas are estimates only and are subject to final survey.

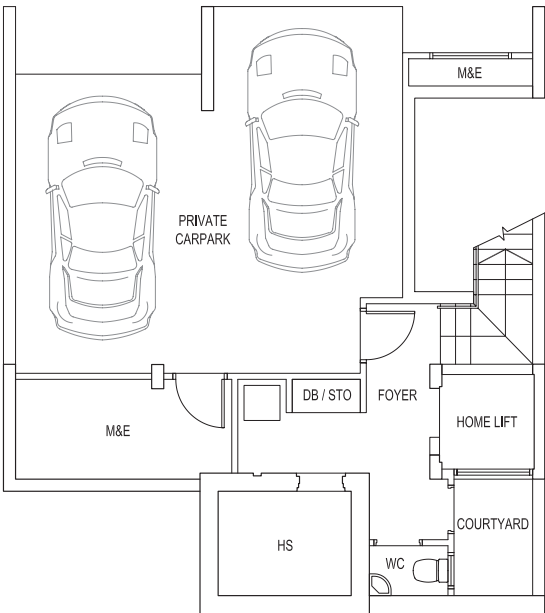


STRATA BUNGALOWS

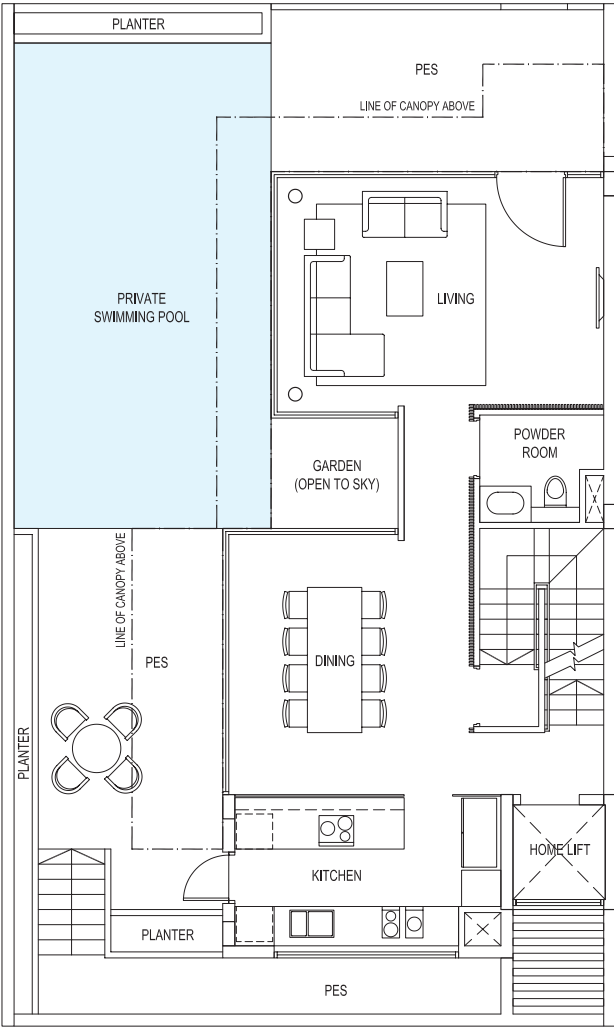
TYPE:D2

Area: 509 sqm / 5479 sqft
House No. 18

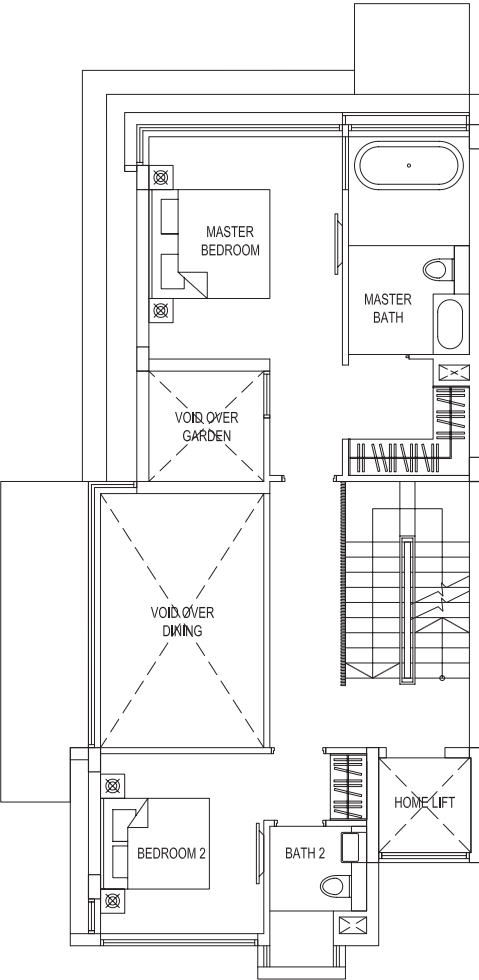
BASEMENT



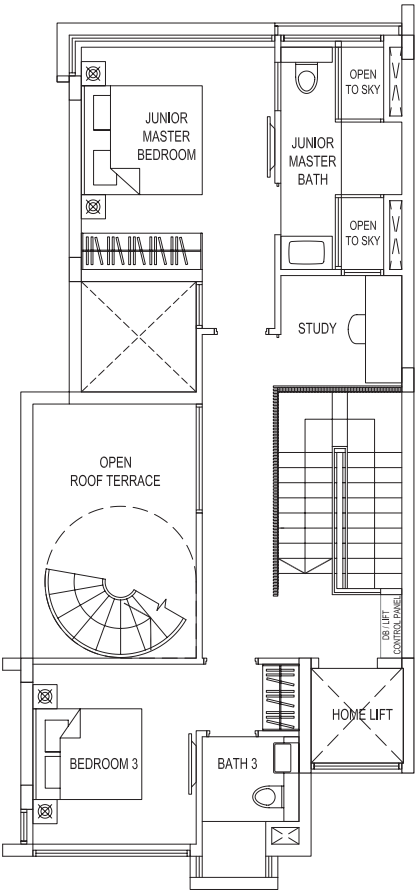
1ST STOREY



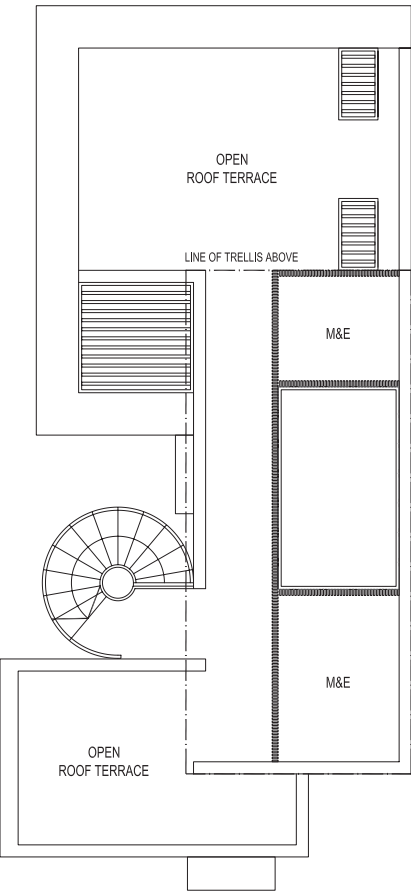
2ND STOREY



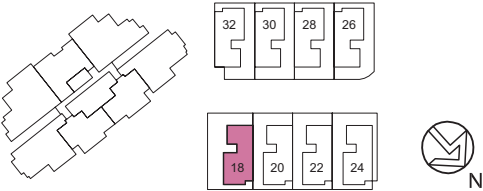
3RD STOREY



ROOF TERRACE



Note: The plans are subject to change as may be required or approved by the relevant authorities. These are not drawn to scale and are for the purpose of visual presentation of the different layouts that are available. Areas are estimates only and are subject to final survey.

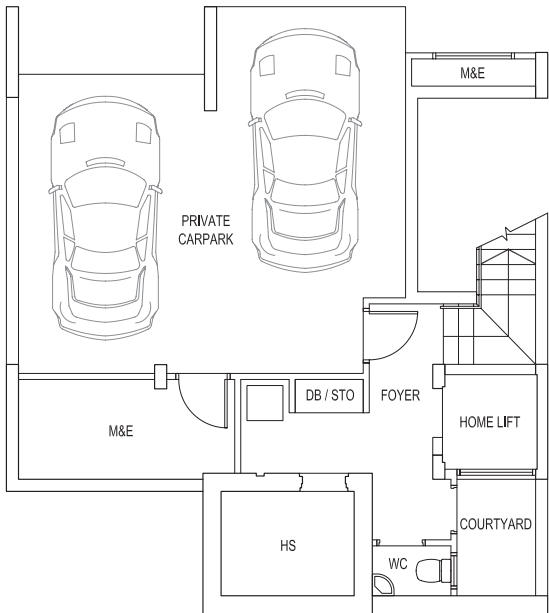


STRATA BUNGALOWS

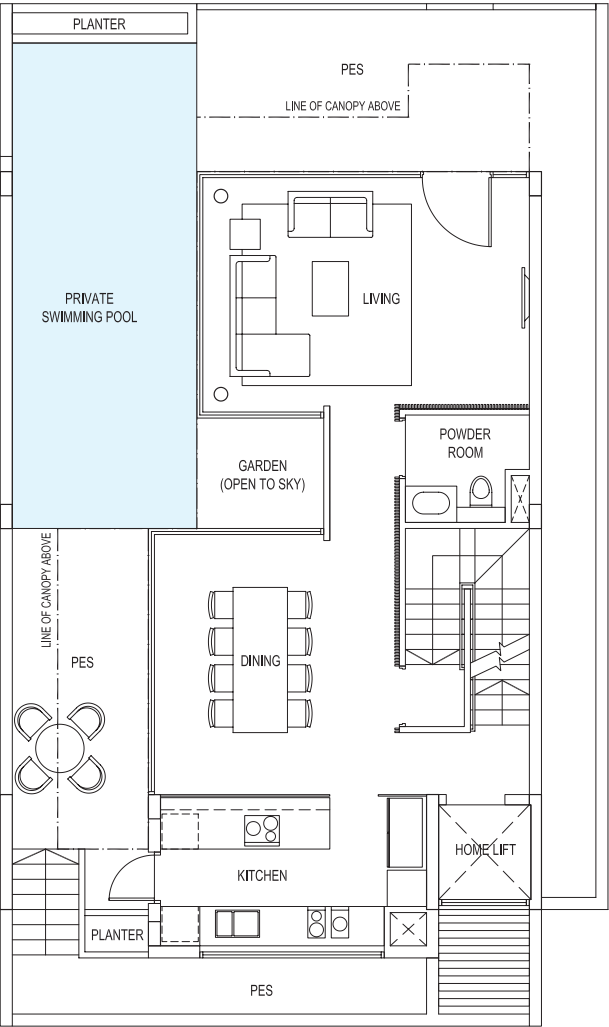
TYPE:D3

Area: 502 sqm / 5404 sqft
House No. 24

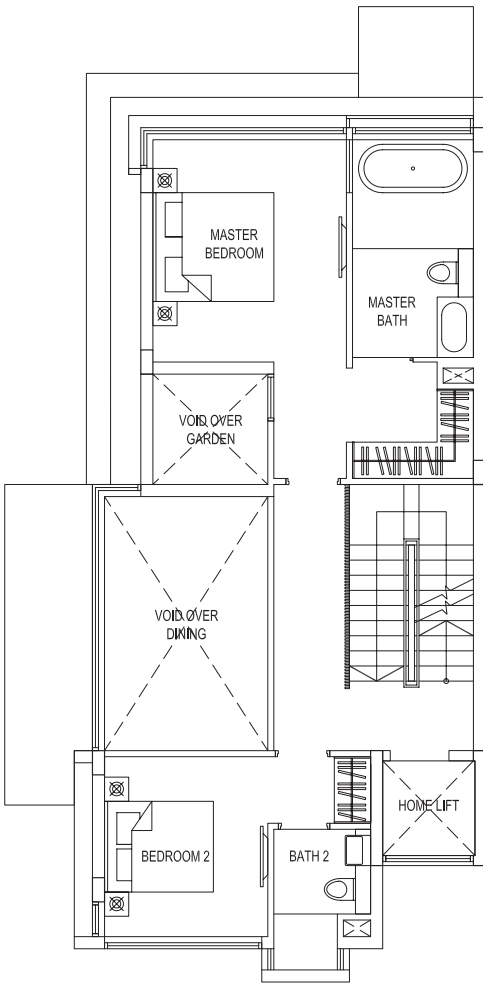
BASEMENT



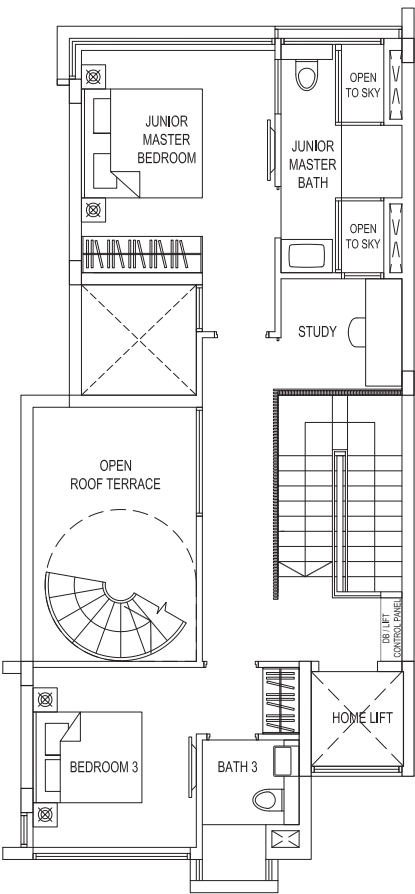
1ST STOREY



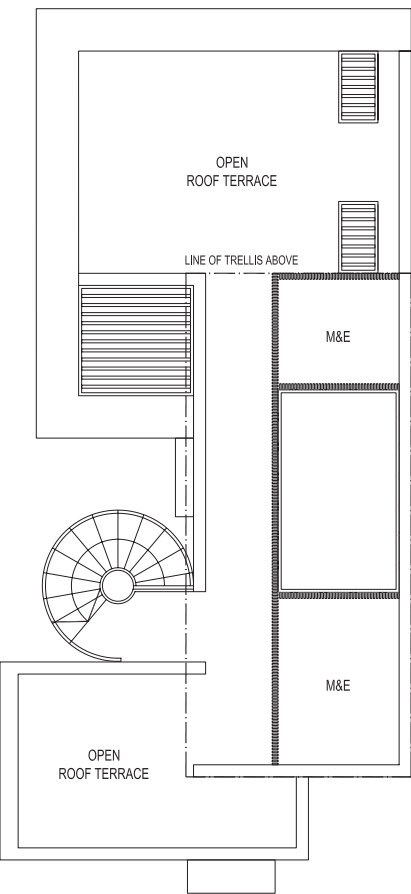
2ND STOREY



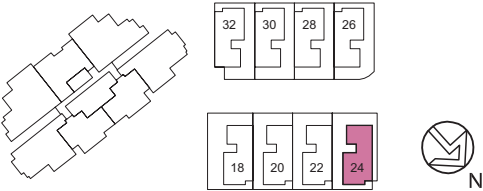
3RD STOREY



ROOF TERRACE



Note: The plans are subject to change as may be required or approved by the relevant authorities. These are not drawn to scale and are for the purpose of visual presentation of the different layouts that are available. Areas are estimates only and are subject to final survey.

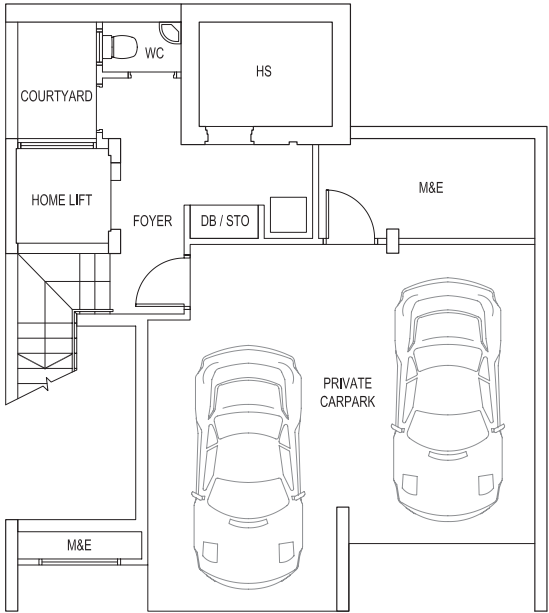


STRATA BUNGALOWS

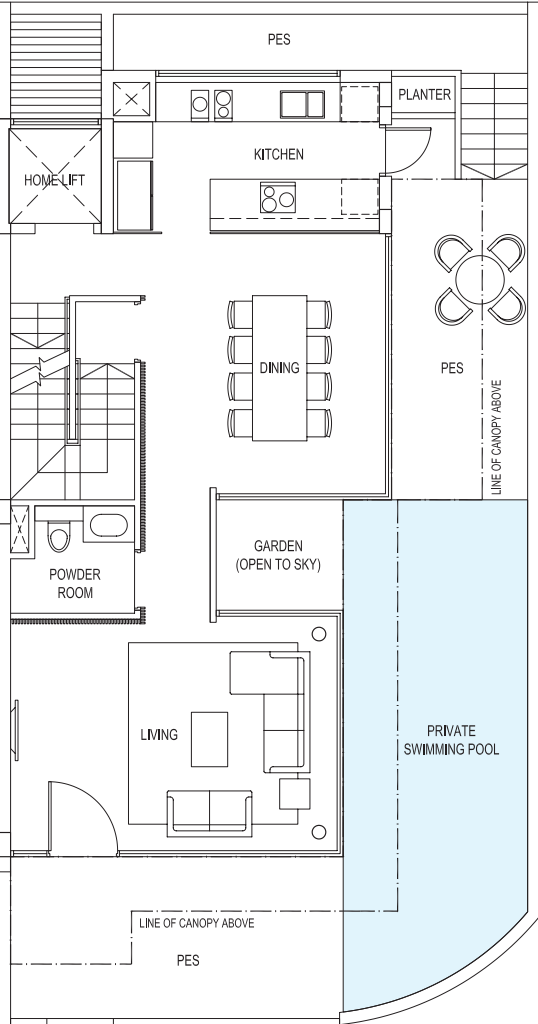
TYPE:D4

Area: 487 sqm / 5242 sqft
House No. 26

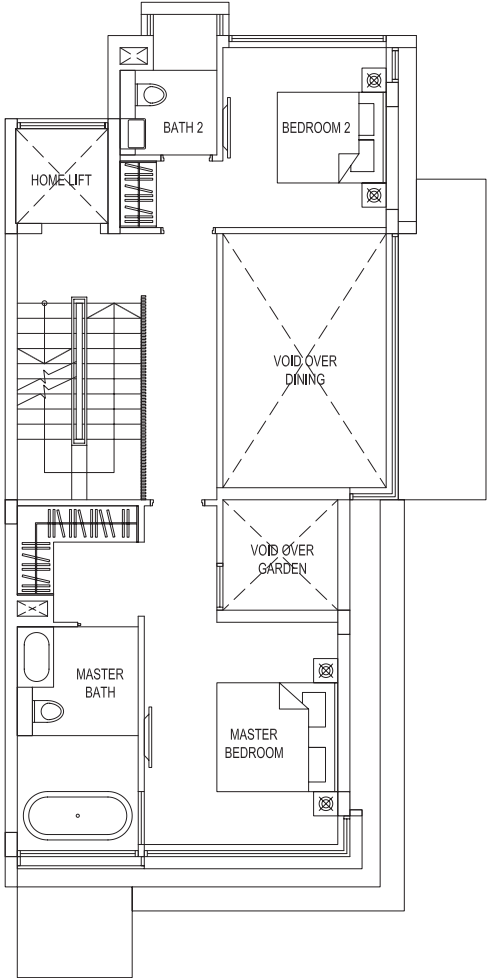
BASEMENT



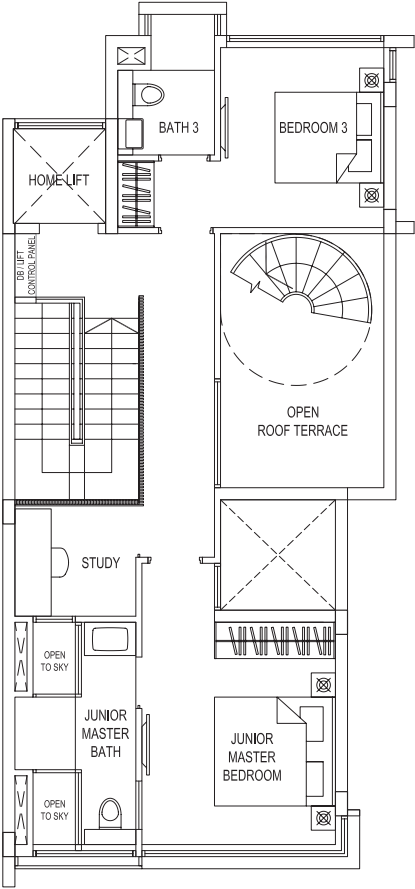
1ST STOREY



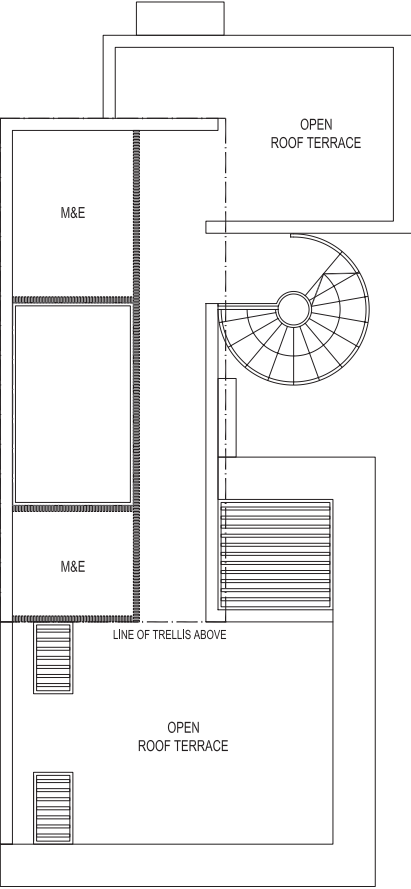
2ND STOREY



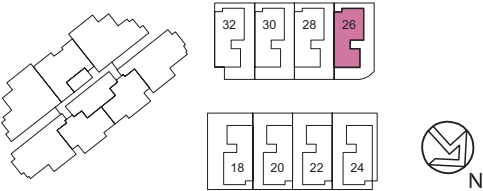
3RD STOREY



ROOF TERRACE



Note: The plans are subject to change as may be required or approved by the relevant authorities. These are not drawn to scale and are for the purpose of visual presentation of the different layouts that are available. Areas are estimates only and are subject to final survey.

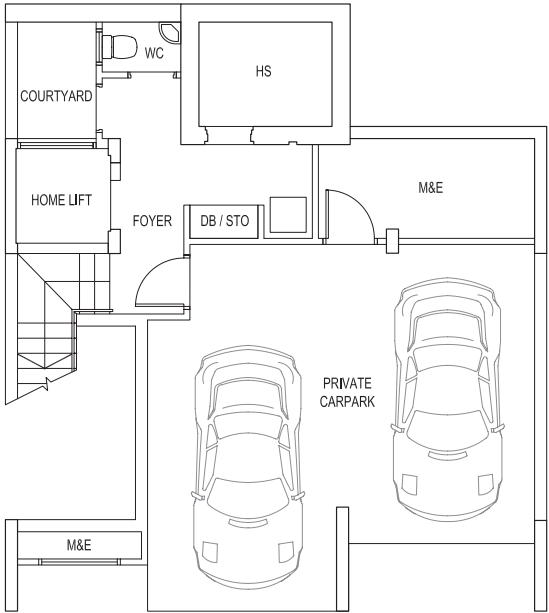


STRATA BUNGALOWS

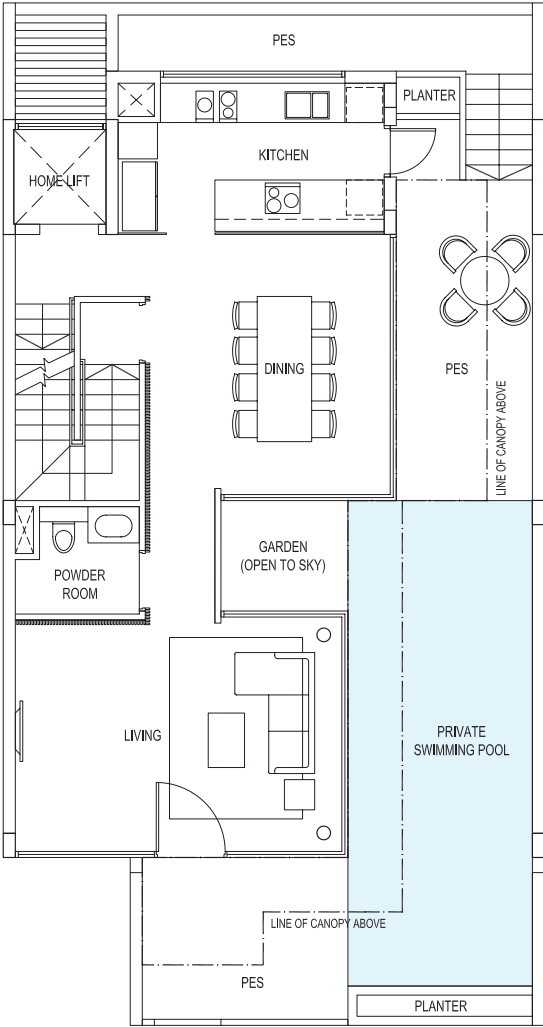
TYPE:D5

Area: 480 sqm / 5167 sqft
House No. 32

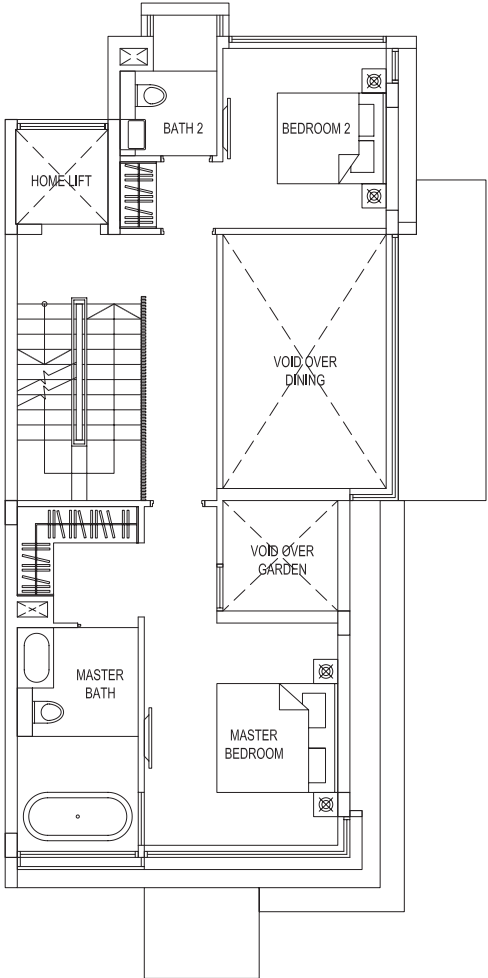
BASEMENT



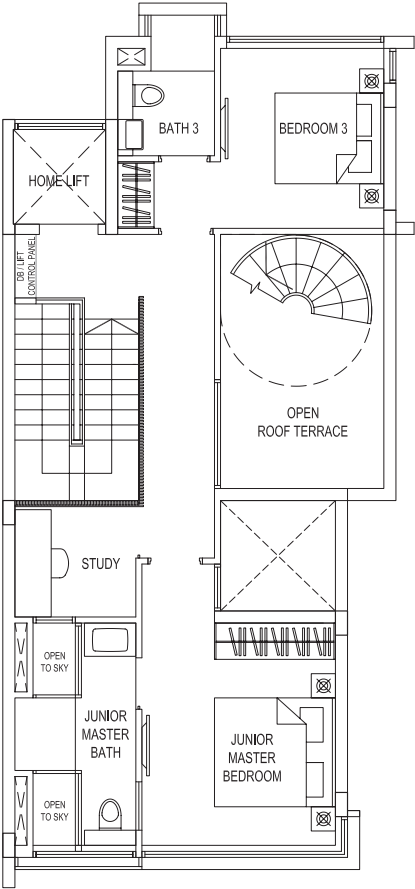
1ST STOREY



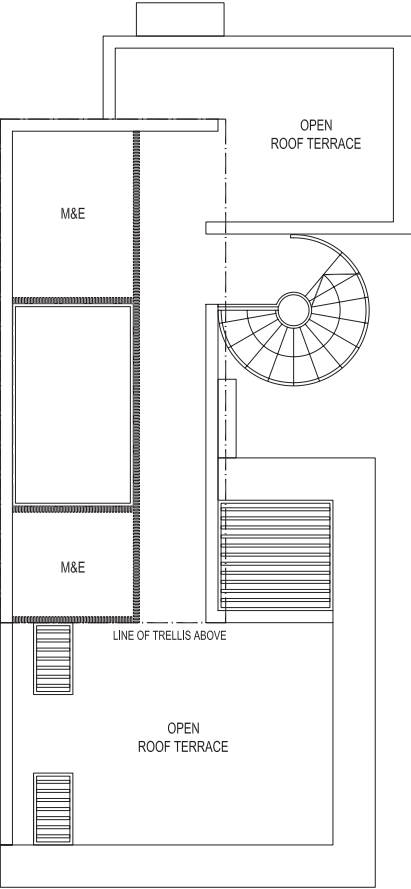
2ND STOREY



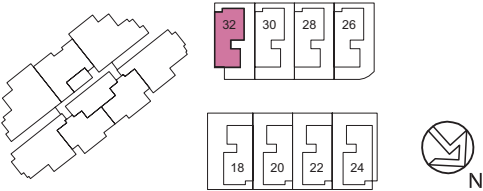
3RD STOREY



ROOF TERRACE



Note: The plans are subject to change as may be required or approved by the relevant authorities. These are not drawn to scale and are for the purpose of visual presentation of the different layouts that are available. Areas are estimates only and are subject to final survey.



BUILDING HOMES OF DISTINCTION

Over the last 60 years since its incorporation in the 1950s, Tong Eng Brothers and its group of companies take pride in developing distinctive buildings that are a harmonious blend of form and functionality.

Through the 1960s till today, the group has owned and developed more than a hundred acres of land, encompassing office, retail, landed housing and apartment projects.

The Tong Eng Group continues to blend creative planning and understated elegance while adopting new concepts and technology in developing buildings with enduring value. With each project, careful attention is paid to every detail, from redefining spaces to ensure the optimum layout, as well as providing only the most impeccable finishing and quality.



Three Balmoral
Balmoral Road (Apartment)



Belgravia Villas
Belgravia Drive (Strata Housing)



Tropika East
Foo Kim Lin Road (Condominium)



Poets Villas
Tagore Ave (Strata Housing)



Hertford Collection
Hertford Road (Apartment)



Balcon East
Upper East Coast Road (Apartment)

JOINTLY DEVELOPED BY



CLARUS
CORPORATION PTE LTD

Tel: 6226 6333 | www.tongeng.com.sg
101 Cecil Street #26-01/07 Tong Eng Building, Singapore 069533

